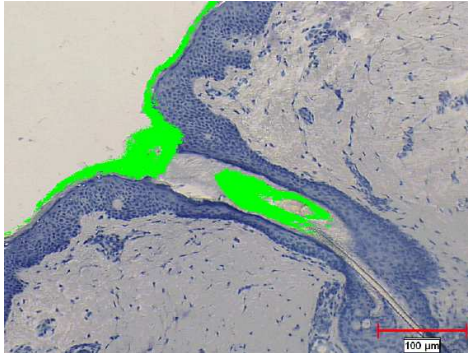


Products Under Development

SL017 for Hair Removal

Quest has completed a Phase I study for the assessment of histological localization of SL017 Topical Gel in hair follicles and sebaceous glands. The Phase I study results showed that the product is well tolerated with no adverse events. Localization of the drug in hair follicles is also detected. Quest has initiated a Phase I/II clinical trial in Q1, 2007 to study the combination of SL017 Topical Gel with Intense Pulsed Light (IPL) for hair removal. The Phase I/II study will evaluate the optimum light dose for hair removal as well as utility of SL017 with removal of light pigmented hair. Use of SL017 with a light-based hair removal device is likely to overcome some of the limitations (low efficacy on blond, red or white hair) associated with the light treatment alone.

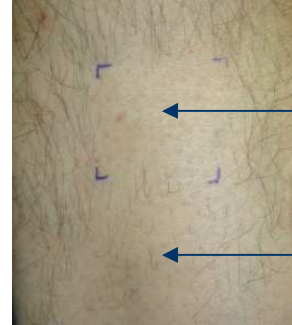


Phase 1 Clinical trial result:

Follicular localization detected as early as 30 minutes and highest at 1 hour after application

Hair follicle localization and low epidermal level make it ideal for PDT hair removal application

Product well tolerated with no adverse event



SL017 and IPL Treated

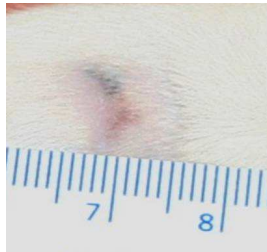
Control (hair regrowth)

HB Injectable: SL052 (PDT) for Prostate Cancer (Collaboration with Dr. Ron Moore, Cross Cancer Institute)

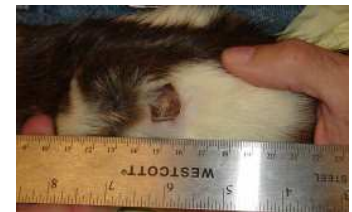
SL052 for Prostate Cancer is designed to be more effective than current treatments in destroying the cancerous tumors on the prostate while limiting collateral damage to healthy tissue. Preclinical animal tumor model studies have demonstrated the effectiveness of SL052 PDT to destroy tumor tissues. Quest has also completed preliminary prostate PDT treatment with SL052 in a canine model. Significant glandular tissue ablation and prostate shrinkage are achieved with minimal side effects.



Mouse Tumor Model (Control Day 0)



Mouse Tumor Model SL052 PDT Treated Day 35



Rat Tumor Model SL052 PDT Post Treatment Tumor Necrosis



Effect of SL052 and PDT Treatment on Dog Prostate